



PHONE 843.830.0158

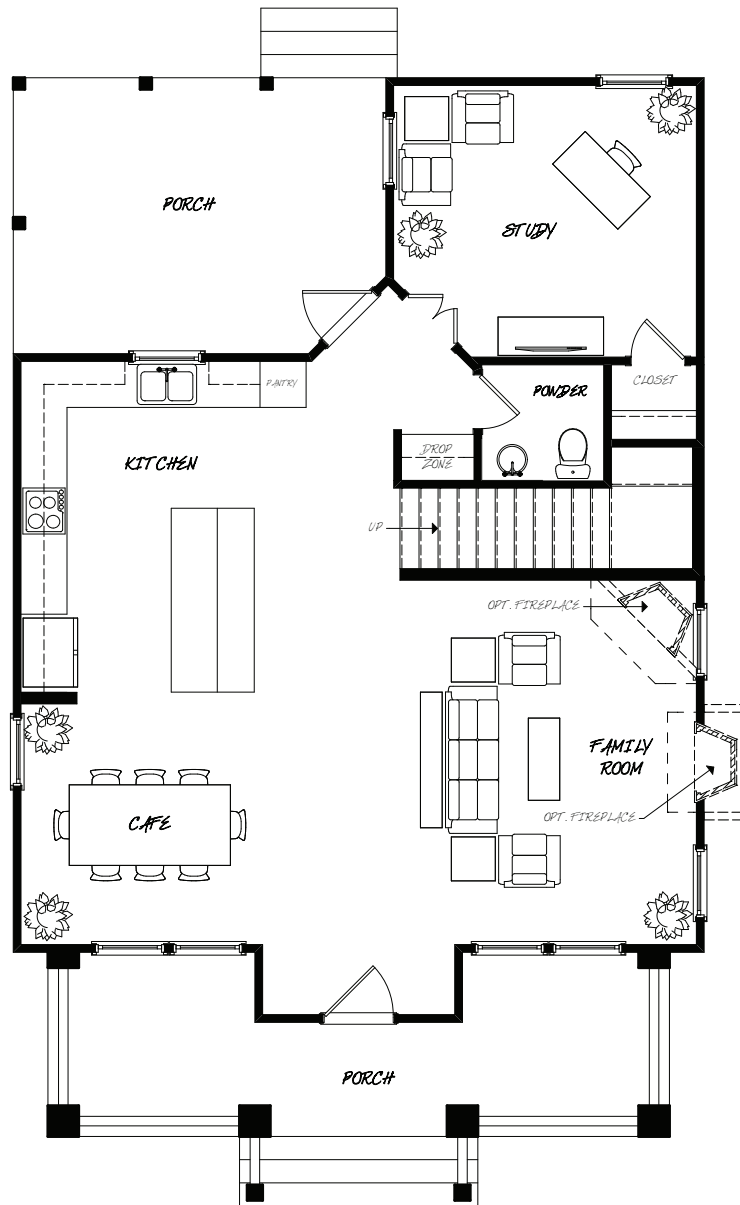
- PAMPAS -

2,053 sq. ft.

3 bedrooms • 2.5 baths

First Floor

FLOOR PLAN REPRESENTS
- ARTS & CRAFTS EXTERIOR -



SUMMERS CORNER[™]
SUMMERVILLE, SC

Floorplans and elevations are artist's renderings and may contain options, which are not standard on all models. Sabal Homes reserves the right to make changes to these floorplans, specifications, dimensions and elevations without prior notice. Stated dimensions and square footage are approximate and should not be used as representation of the home's precise or actual size. Copyright ©2017 5/2017



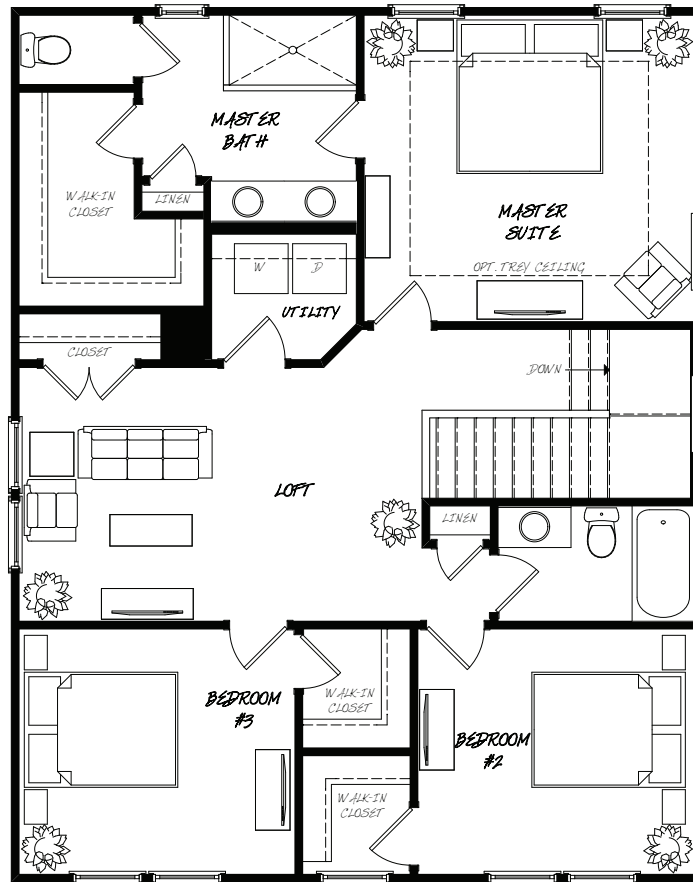
PHONE 843.830.0158

- PAMPAS -

//

2,053 sq. ft.
3 bedrooms • 2.5 baths
Second Floor

FLOOR PLAN REPRESENTS
-ARTS & CRAFTS EXTERIOR-



SUMMERS CORNER[™]

SUMMERVILLE, SC

Floorplans and elevations are artist's renderings and may contain options, which are not standard on all models. Sabal Homes reserves the right to make changes to these floorplans, specifications, dimensions and elevations without prior notice. Stated dimensions and square footage are approximate and should not be used as representation of the home's precise or actual size. Copyright ©2017 5/2017



PHONE 843.830.0158

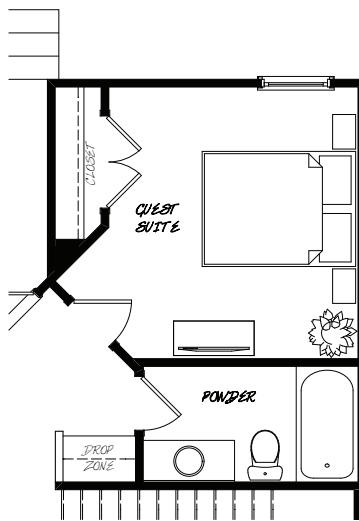
- PAMPAS -

2,053 sq. ft.
3 bedrooms • 2.5 baths
Options

FLOOR PLAN REPRESENTS
-ARTS & CRAFTS EXTERIOR-



3RD FLOOR WALK UP



OPT. GUEST SUITE

SUMMERS CORNER[™]
SUMMERVILLE, SC



PHONE 843.830.0158

- PAMPAS -

2,053 sq. ft.
3 bedrooms • 2.5 baths

- ARTS & CRAFTS -



- COLONIAL REVIVAL -



- LOWCOUNTRY -



SUMMERS CORNER[™]
SUMMERVILLE, SC